

# Macro-invertebrate record sheet—Method 1

Date (dd/mm/yy)

/ /

Monitor(s) \_\_\_\_\_

Site code \_\_\_\_\_

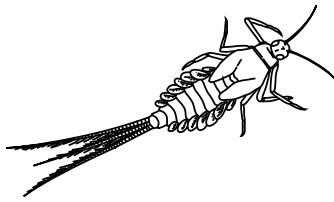
Tributary name \_\_\_\_\_

**Tick the boxes of the macro-invertebrates (water bugs) present at your site**

*Turn over the page to find extra information to help you identify your bugs.*

Mayfly nymph

*very sensitive*



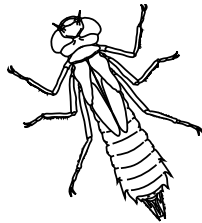
Caddisfly larva

*very sensitive*



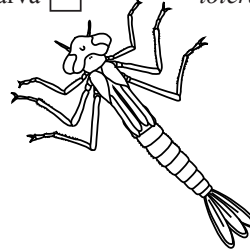
Dragonfly nymph

*tolerant*



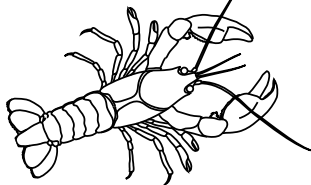
Damselfly larva

*tolerant*



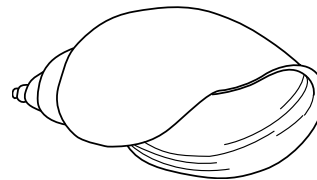
Freshwater yabby

*tolerant*



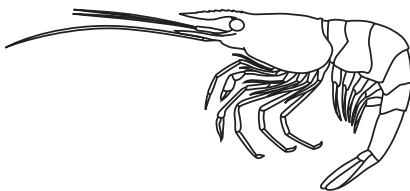
Freshwater snail

*very tolerant*



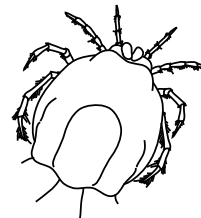
Freshwater shrimp

*tolerant*



Water mite

*sensitive*



Water boatmen

*very tolerant*



Freshwater worm

*very tolerant*



## Macro-invertebrate record sheet—Method 1 page 2

Stream ratings	
<b>Excellent</b>	Mayfly nymphs and caddisfly larva are present (water bugs very sensitive to pollution)
<b>Good</b>	Water mites are present (sensitive water bugs)
<b>Fair</b>	Dragonfly nymphs, damselfly larva, freshwater shrimps and freshwater yabbies are present (tolerant water bugs)
<b>Poor</b>	Only freshwater snails, water boatmen and freshwater worms are present (very tolerant water bugs)

### The rating of your stream is:

Excellent                       Good                       Fair                       Poor

### Very sensitive macro-invertebrates

**Mayfly nymph**—2 to 32 mm; has three long tails; clings to rocks and logs in streams or swims freely in ponds.

**Caddisfly larva**—1.5 to 40 mm; lives in a case of algae; plant material or silt; looks like a twig; swims or crawls around.

### Sensitive macro-invertebrates

**Water mite**—up to 5 mm; found in well-vegetated, shallow, sheltered standing waters and in gravel in flowing water; has four pairs of legs and no antennae and is often brightly coloured red, green or black.

### Tolerant macro-invertebrates

**Dragonfly nymph**—up to 50 mm; lives under stones, bark, branches and reeds; is a hardy creature with a stout body.

**Damselfly larva**—up to 35 mm; found clinging to logs or vegetation in slow-flowing pools and ponds; body is slender and has three leaf-like gills at the end.

**Freshwater shrimp**—up to 35 mm; found in lowland river, streams and standing waters; has a fanned tail and long, thin legs.

**Freshwater yabby**—up to 400 mm; found in slow-flowing and still waters; burrows into the sediment; has well developed claws.

### Very tolerant macro-invertebrates

**Freshwater worm**—up to 20 mm; occurs in a wide range of habitats, withstanding extreme water and quality conditions and is found on or in the sediment; usually red or brown in colour.

**Water boatmen**—up to 10 mm; found in a variety of habitats including still and slow flowing poos and on stream beds; has a long, flat oval body and oar-like legs.

**Freshwater snail**—up to 65 mm diameter; found sticking to plants and stones in slow or still waters; soft body is protected by a shell.